

CAN YOU
IMAGINE?

HONORING
WOSEN KIFLE



by STUDENTS from CLARA BARTON OPEN SCHOOL



CAN YOU IMAGINE?

Words & music by KATRINA BELDING'S 5th & 6th GRADE CLASS
with help from Music Instructor Lisa Skaff & Student Learning
Programs Specialist Anthony Galloway.

Illustrations by KATRINA BELDING'S 5th & 6th GRADE
CLASSROOM with help from Art Instructor Meri Gauthier.

CLARA BARTON OPEN SCHOOL, Minneapolis, Minnesota

Produced by:



Community Celebration of Place
Box 581601
Minneapolis MN 55458-1601

Email: larrylong@communitycelebration.org

Web: www.communitycelebration.org

Funded in part through a 'Mini-grant for Integrated Learning' from the Office of Equity & Diversity, Minneapolis Public Schools (MPS), and the West Metro Education Program (WMEP). Copyright Larry Long Publishing 2014 / BMI. All Rights Reserved

CAN YOU
IMAGINE?

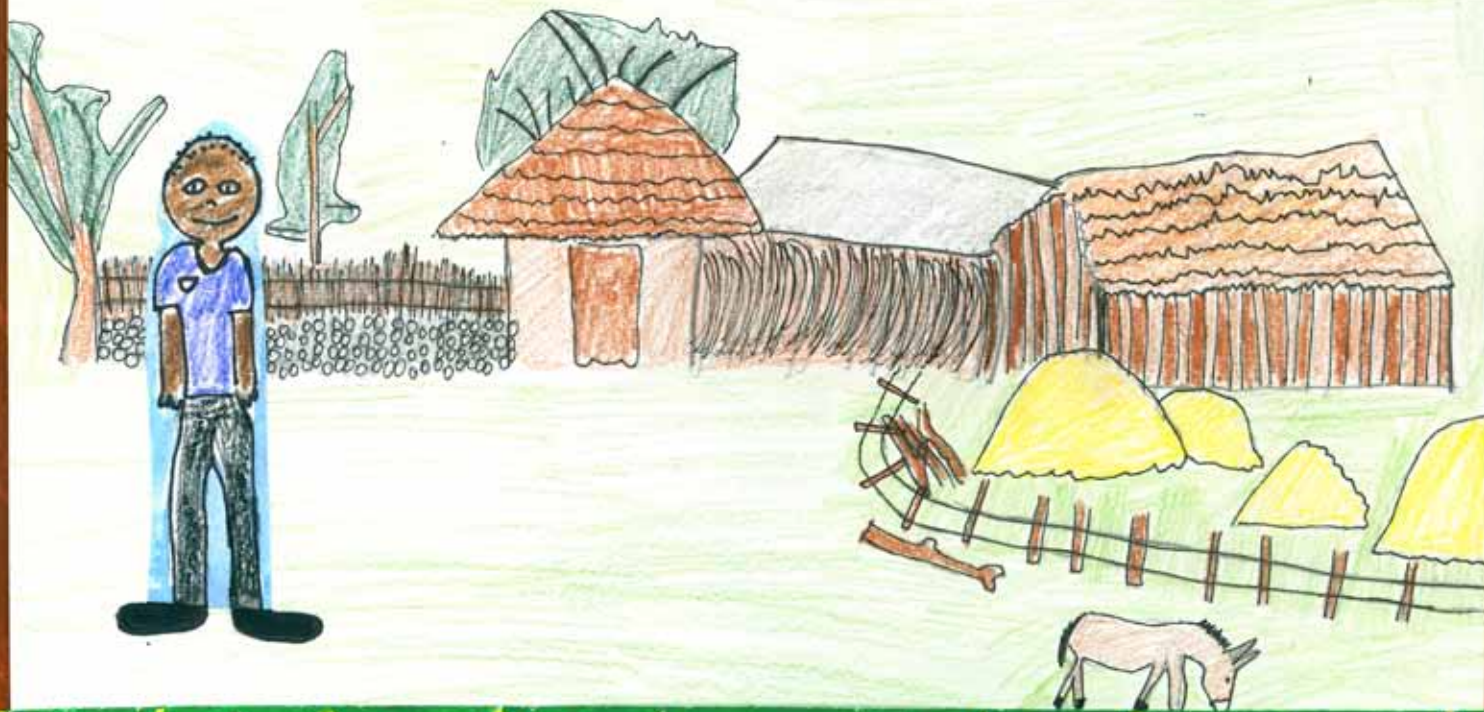
HONORING WOSEN KIFLE



Don't take things for granted.
Everyday find something new.



You have to understand,
From the city to the land,
Each week from school to Furi.





Building toys to pass the day.



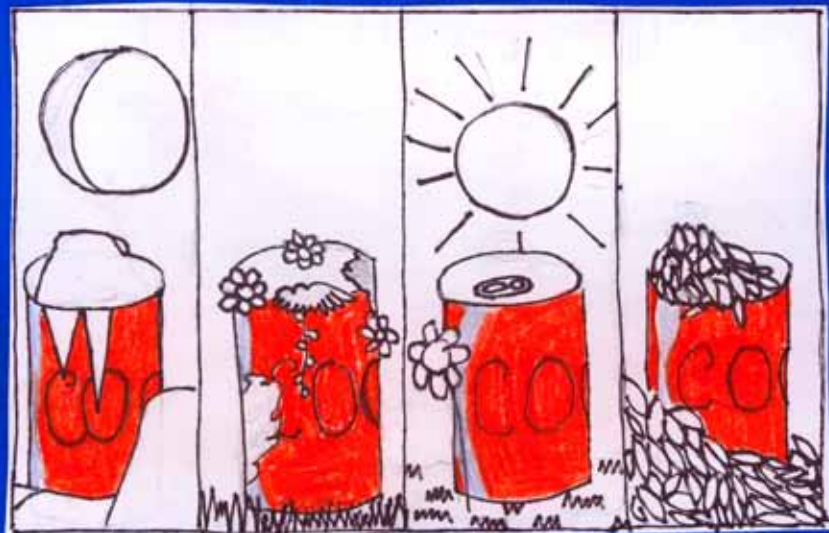
Making use of everything,
Life meant helping your family.

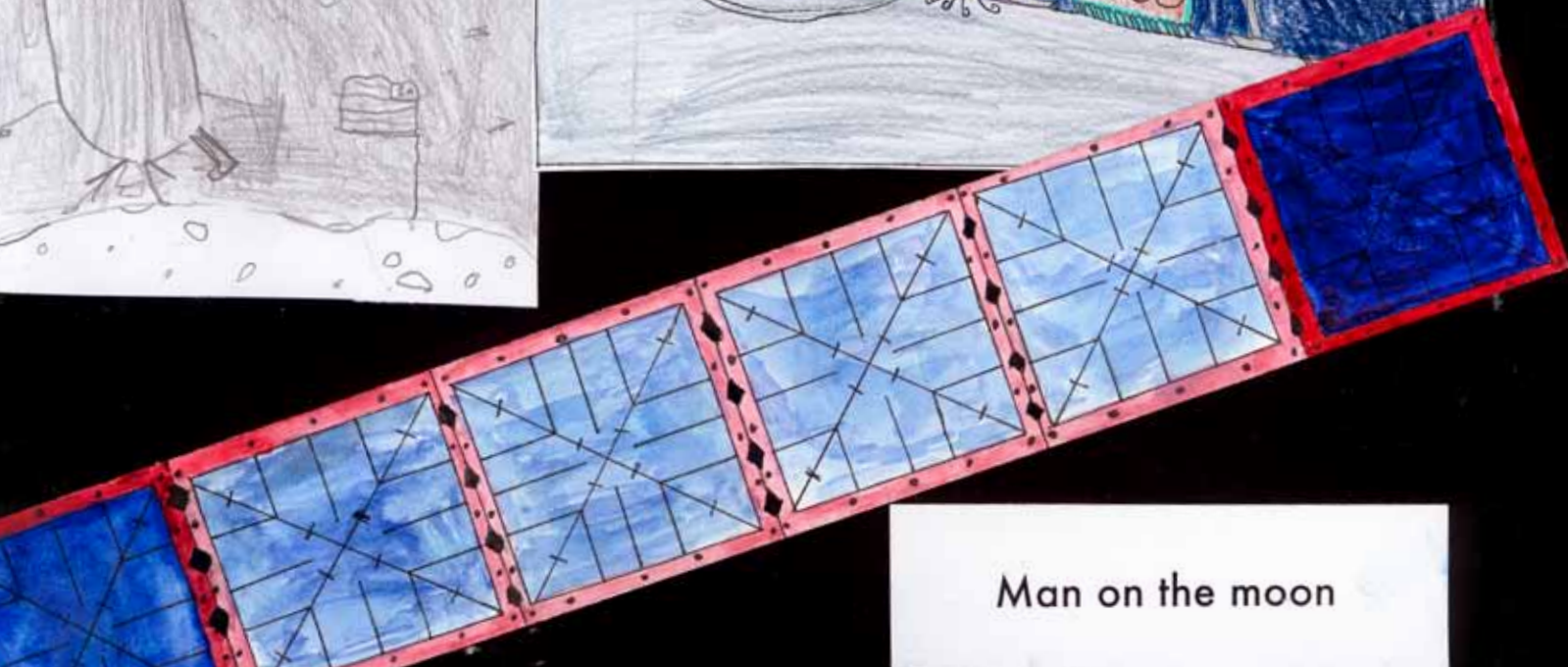


Saw America in the movies.



Coca cola



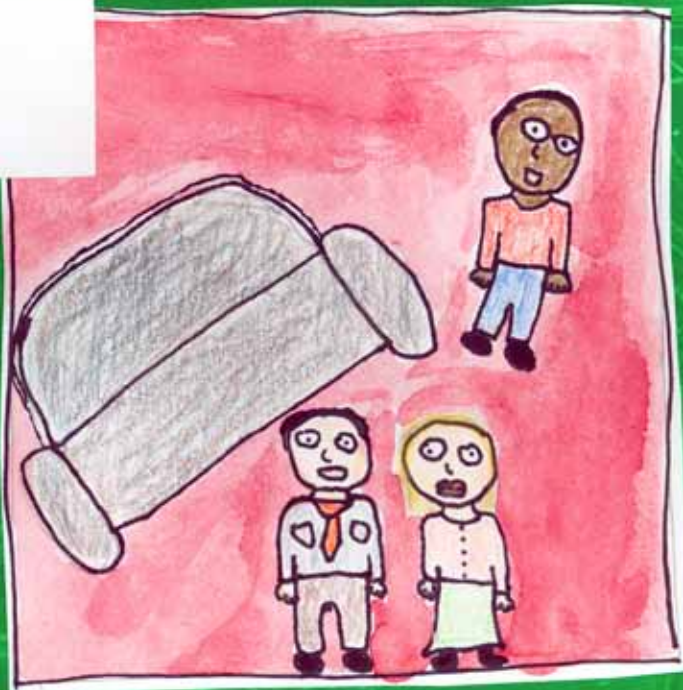


Man on the moon

Arrived here, "it's paradise."
This made my dreams come true.



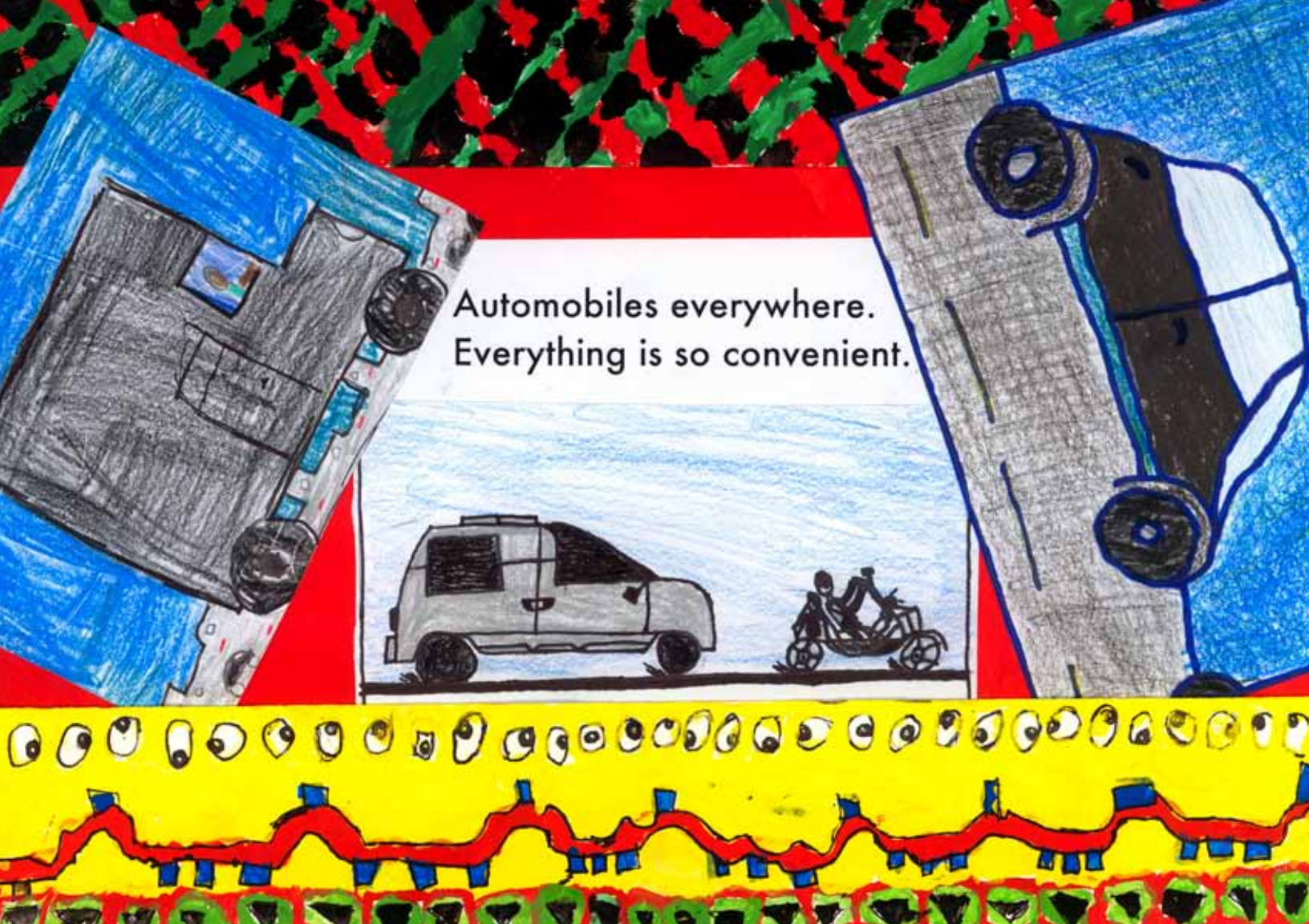
Stayed with Mr. and Mrs. Hude.





From Boston to Minnesota.
Sidewalks changed with the seasons.





Automobiles everywhere.
Everything is so convenient.

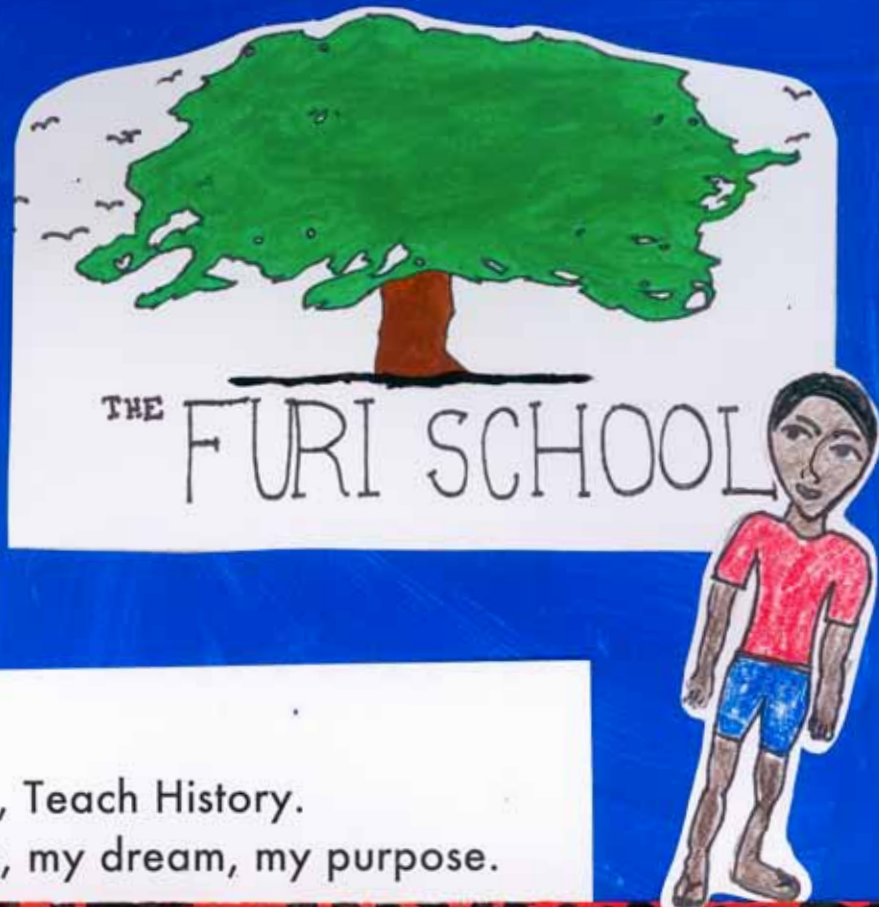


Close friends become family



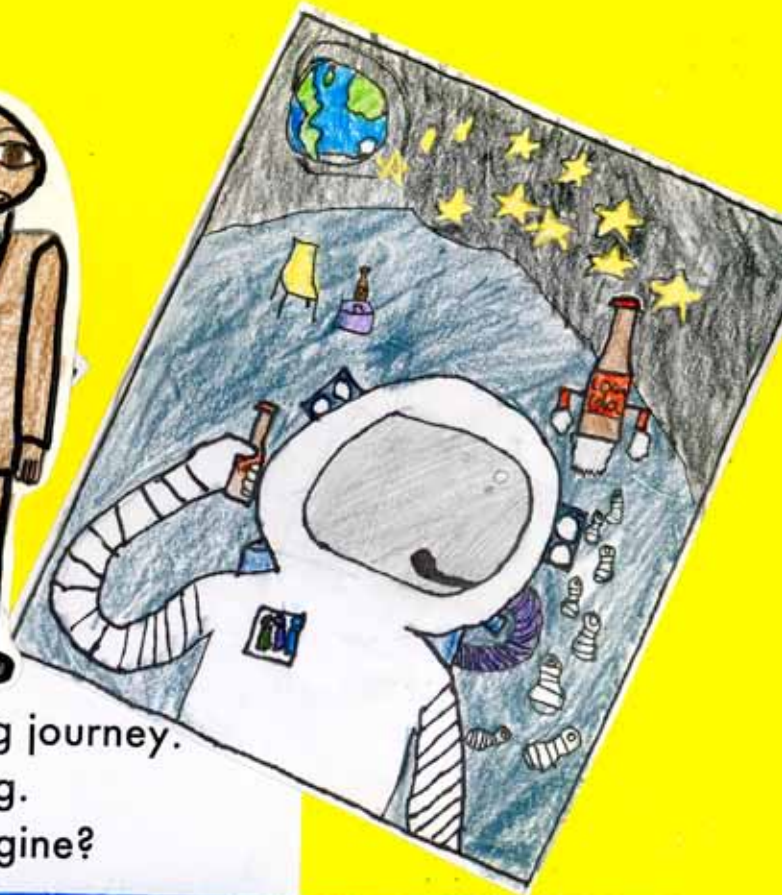
Help me build a school in Furi.
No need to walk like I did.
Running water and a nurse.





Be principal, Teach History.
Giving back, my dream, my purpose.





An interesting journey.
So fascinating.
Can you imagine?



ABOUT THIS BOOK:

CAN YOU IMAGINE? was produced through an educational and cultural program created by Smithsonian Folkways Recording artist Larry Long, entitled Elders' Wisdom, Children's Song.

Elders' Wisdom, Children's Song is a program of Community Celebration of Place, a non-profit organization, which works with communities through music, performance, art and oral history to bring together children, elders, and people of different backgrounds-economic, faith, racial and cultural-in order to build intergenerational and multicultural opportunities for all schools and communities to prosper.

Dr. Tony Seeger, Curator Emeritus of Smithsonian Folkways, writes, *"When senior members of a community talk about their lives and work and children write songs with Larry Long about what they have learned from the elders, they create a remarkable celebration of humanity and hard work."*



To learn more about Elders' Wisdom,
Children's Song:
www.communitycelebration.org

Produced by:



Community Celebration of Place
Box 581601
Minneapolis MN 55458-1601

Email: larrylong@communitycelebration.org

Web: www.communitycelebration.org

Funded in part through a 'Mini-grant for Integrated Learning
from the Office of Equity & Diversity, Minneapolis Public
Schools (MPS), and the West Metro Education Program
(WMEP)

Copyright Larry Long Publishing 2014 / BMI. All Rights Reserved



PRINTED ON 100% POST CONSUMER WASTE RECYCLED PAPER

ISBN 978-0988994519-6



9 780989 945196