

TO GIVE OF YOURSELF

Honoring Gary & Mary Jean Sampson

Music by LARRY LONG

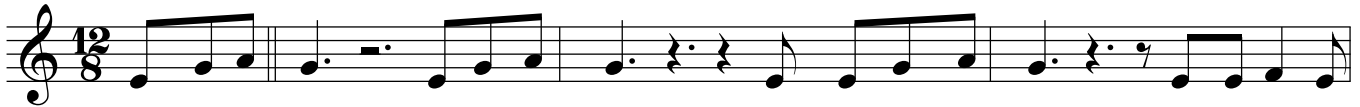
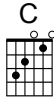
Words by LARRY LONG and MRS. VALME'S

4th GRADE CLASS OF FAIR SHOOL

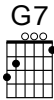
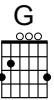
(Crystal, Minnesota)

(call and response)

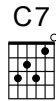
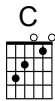
(VERSE)



Born on a farm with a wood stove. Each day we would walk down a long dirt



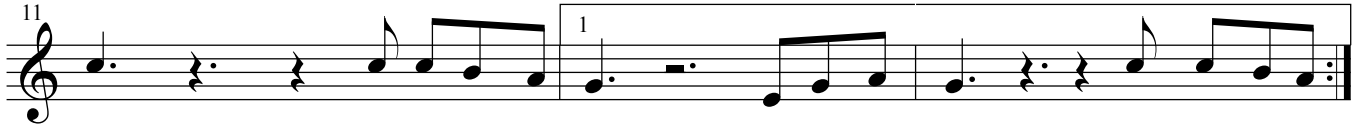
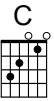
road to the school house. All grades in one room. Af-ter the



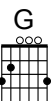
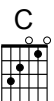
(CHORUS)



chores we had more work to do. To give of your self. To al-ways be
else. In all that you



there. To to-tal - ly give. To al-ways care for some-bo-dy
do. In all that you



give. I give to you.